



— Class of —
2022



WELCOME CLASS OF 2022!

Congratulations Scholars! In addition to welcoming over 300 new scholars in 2022, Wallin Education Partners is celebrating our 30th Anniversary. A milestone for you and for us!

You are graduating from high school and starting college at an extraordinary time. Despite the challenges presented by a global pandemic and the disruption of many things in our world, you persevered. We are thrilled to welcome you to the Wallin Education Partners community. Let me share a bit of the history of the founding family and the enduring mark of Win and Maxine Wallin on our program.

Maxine and Win Wallin began a scholarship program in 1992 to help students with financial need go to college and earn a degree. As a businessman and civic leader, Win recognized that a thriving

economy depends on a skilled, diverse workforce. He believed that equal access to higher education was essential and the best investment in the future. The Wallin family's legacy of helping others succeed continues to this day.

Another donor who deserves special recognition is Taige Thornton and NorthStar Education Finance. The generosity of NorthStar has enabled us to strengthen our program and build our capacity to serve more scholars.

Since 2017 NorthStar has supported 679 students attending four-year institutions.

We strongly believe that each of you is ready for college and this new and very exciting step. Take pride in your accomplishments and embrace all that you are about to experience. Be sure to

thank your family, friends, and many teachers, counselors, administrators, and mentors who have played an important role in helping prepare you for the journey ahead.

We look forward to working closely with you to ensure that your college experience is rich and meaningful and leads to a fulfilling career. Our trustees, staff, and donors will be cheering you on. Congratulations and once again, welcome to the Wallin Education Partners community!

Susan Basil King
President and CEO

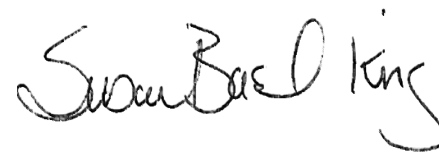




TABLE OF CONTENTS

Chuck Denny Awards.....	6	Hawn Scholar.....	39	Robinson Kurkowski Scholar.....	94
3M Scholars.....	8	Henry Scholar.....	40	Ronald Scholar.....	95
Allianz Life Scholar.....	10	Holman Scholars.....	42	Ruth & Raymond Reister Scholar.....	96
Andersen Corporation Scholars.....	12	Jackson Scholars.....	43	Scherer and Imholte Scholar.....	97
Archibald Bush Scholars.....	14	Julie and Amara Andrus Scholars.....	44	Schulze Family Foundation Scholars.....	98
Black Men Teach Scholar.....	18	Kirwin Scholar.....	46	SFM Bob Lund Scholar.....	100
Boston Scientific Scholars.....	19	Maybloom-Suzukamo Scholars.....	48	Sit Investment Associates Scholar.....	101
Brian and Mia Sullivan Scholar.....	20	McDonagh-Sullivan Scholar.....	50	SPS Commerce Scholar.....	102
Cornwall Scholars.....	22	Medtronic Scholars.....	52	Star of the North Scholars.....	104
Cornwell Scholars.....	24	Minnesota Opportunity Scholars.....	54	Think IT Young Professional Scholars.....	108
Dixon Scholar.....	26	Mulrooney, Larson, and Eldred Scholars.....	56	True North Scholars.....	110
Donaldson Scholar.....	27	Nellie Griswold Francis and William T. Francis Scholars.....	58	U.S. Bank Scholars.....	112
Enterprise Scholars.....	28	NorthStar Education Finance Scholars.....	60	Wallin Foundation Scholars.....	114
Esther Johnson Scholar.....	30	Piper Sandler Scholars.....	88	WCA Foundation Scholar.....	126
Ettinger Scholars.....	32	Ravich Scholar.....	90	Well-Being of All Foundation Scholars.....	127
Flaherty Family Foundation Scholar.....	34	Richard F. McNamara Scholar.....	91	Wildhearts Scholar.....	128
G. Robert Strauss Jr. Scholar.....	36	Robert & Ardis James Foundation Scholars..	92	Ya Yang Scholar.....	129
Halverson Scholars.....	37				



Chuck Denny AWARDS



Chuck Denny was a successful businessman, community leader, and philanthropist. Wallin Education Partners was the lucky recipient of his leadership and vision. At his memorial service in November 2019, Chuck was remembered for his statesmanship and innumerable contributions to Minnesota.

As Chairman of the Board of Wallin Education Partners at a critical point in our history, Chuck's clarity of purpose, integrity, and kindness left an indelible mark on the organization. Established in 2016, the Chuck Denny Award is given annually to Wallin Scholars who are continuing their education in graduate school and who, through their involvement and commitment to our community during college, have demonstrated a commitment to civic engagement and public service.



NAJMA ALI

.....

Master's in Global Health Program Design,
Monitoring, and Evaluation at George
Washington University Milken Institute
School of Public Health

Najma is a driven and deliberate leader. When she started college, she had plans to become a doctor or physician's assistant. The rise of COVID-19 caused Najma to change her perspective on how she wants to serve her community and the world. Working in a healthcare facility amidst the pandemic helped Najma draw a connection between treating individual patients and the broader world of public health. She shared, "Why treat one person when you can help a whole community?" We know her determination, kindness, and initiative will serve her and the entire community.



NIVIAN MORAA

.....

Master's of Health Administration at
University of Minnesota – Twin Cities

Nivian's interest in public health is longstanding and rooted in both community and care. Growing up in Kenya, Nivian was already aware of disparate access to sanitation, clean water, and health care. After several moves, she found herself in Minneapolis, where she observed opioid addiction and its tragic consequences. As Nivian has continued her education, she has seen the importance of public health and the systemic challenges communities face. Nivian is excellent at connecting with people, listening to their needs, and providing authentic care. We are excited about her future in graduate school and her work in public health!

3M SCHOLARS

DONOR PARTNER SINCE 2009
SCHOLARS SUPPORTED: 71



3Mgives has partnered with Wallin Education Partners since 2009 to offer college scholarships and professional advising services to students who are furthering their education in science, technology, engineering, or business.

3M has helped to improve lives through innovative products and solutions as well as investments in our communities around the world. Since 1953, 3M has donated nearly \$1.6 billion in cash and in-kind gifts to education and nonprofit organizations. 3Mgives has partnered with the St. Paul Public School District for over 40 years to help students achieve, graduate, and be ready for postsecondary education.



SCHNEADER ABANEI

Tartan Senior High School
Saint Cloud State University



HSER HTOO

Humboldt Senior High School
University of St. Thomas



ABDIRAHMAN OMAR

.....

South High School
University of Minnesota - Twin Cities



HLINA TESSEMA

.....

Burnsville Senior High School
University of Minnesota - Twin Cities



Hser Htoo
3M Scholar

Allianz Life SCHOLAR



We're proud to be part of the global family of Allianz companies. We're part of Allianz SE, a global financial services group that was founded in Germany in 1890. We're also part of the Allianz SE family of companies in North America, including Allianz Global Investors, a network of companies that includes PIMCO (Pacific Investment Management Company LLC), one of the world's leading fixed-income managers.

We earn the trust and loyalty of our employees, customers, distribution partners, and the community by creating and maintaining a culture that values everyone's contributions and diverse perspectives. Our business success depends on our strong culture. We continue to build on this strength to fuel our future growth. Our proven success, clear vision, transparent leadership, and financial strength position us to secure our customers' future.

DONOR PARTNER SINCE 2022
SCHOLARS SUPPORTED: 1

The work we do at Allianz Life matters. To learn more about our culture of caring where employees are valued, included and provided opportunities to grow please click on the following link: <https://www.allianzlife.com/why-allianz/culture>



SAMIRA HUSSEIN

Tartan Senior High School
University of Minnesota - Twin Cities



Andersen Corporation SCHOLARS



DONOR PARTNER SINCE 2017
SCHOLARS SUPPORTED: 12

.....

Andersen was founded in 1903 on the philosophy of working “all together” to deliver on its promise to its customers. Andersen delivers products for the way people live, unmatched performance for the comfort and security homeowners desire, and endless design options to achieve any style.

Headquartered in Bayport, Minnesota, Andersen Corporation and its subsidiaries manufacture and market window and door products under the Andersen®, Renewal by Andersen®,

EMCO®, Weiland®, MQ™, and Heritage™ brands. Andersen, a privately held company with more than 10,000 employees, operates manufacturing sites across North America and Europe. Andersen has earned the U.S. Environmental Protection Agency’s 2021 ENERGY STAR® Partner of the Year – Sustained Excellence Award. Visit us at andersenwindows.com. Follow us on Facebook @AndersenWindows, Twitter @AndersenWindows, and Instagram @andersen_windows.



SHARMARKE AHMED

.....

Hopkins High School
University of Minnesota - Twin Cities



DANIEL HERNANDEZ-ROSAS

.....

Patrick Henry High School
University of Minnesota - Twin Cities



Archibald Bush SCHOLARS



**BUSH
FOUNDATION**

DONOR PARTNER SINCE 2018
SCHOLARS SUPPORTED: 71



The Bush Foundation invests in great ideas and the people who power them in Minnesota, North Dakota, South Dakota and the 23 Native nations that share the same geography. Established in 1953 by 3M executive and Granite Falls native Archibald Bush and his wife Edyth, the Foundation supports organizations and people who think bigger and think differently about what is possible in their communities. We inspire and

support creative problem solving — within and across sectors — to make the region better for everyone. The Archibald Bush Scholarship is made in honor of Archie, his belief in the power of people, and his lifelong commitment to St. Paul and Granite Falls. The Foundation remains committed to doing the most possible good with the resources Archie and Edyth left to the community.



ELIZABETH ABARCA-HERNANDEZ

.....

Highland Park Senior High School
University of St. Thomas



LULYA GEBRESLASSIE

.....

Highland Park Senior High School
University of St. Thomas



CHRISTIAN BEKELE

.....

Highland Park Senior High School
University of St. Thomas



MAHLET GEBREYESUS

.....

Highland Park Senior High School
Howard University



BLESSING ETIM

.....

Washington Technical Magnet School
Bethel University



KYAW HTWAY

.....

Humboldt Senior High School
St. Olaf College

St.

Archibald Bush SCHOLARS



ISAAC JIMENEZ

.....

Yellow Medicine East High School
University of Minnesota - Twin Cities



KIERSTEN LUEPKE

.....

Yellow Medicine East High School
University of Minnesota - Twin Cities



RORY KELLER

.....

Yellow Medicine East High School
Southwest Minnesota State University



DEE MEH

.....

Humboldt Senior High School St.
St. Catherine University



AUTUMN LADWIG

.....

Yellow Medicine East High School
Minnesota State University Moorhead



ISAAC OLEVSON

.....

Yellow Medicine East High School
Hamline University



GAY NEE THAW

.....

Como Park Senior High School
Minnesota State University Mankato



MA MOE WIN

.....

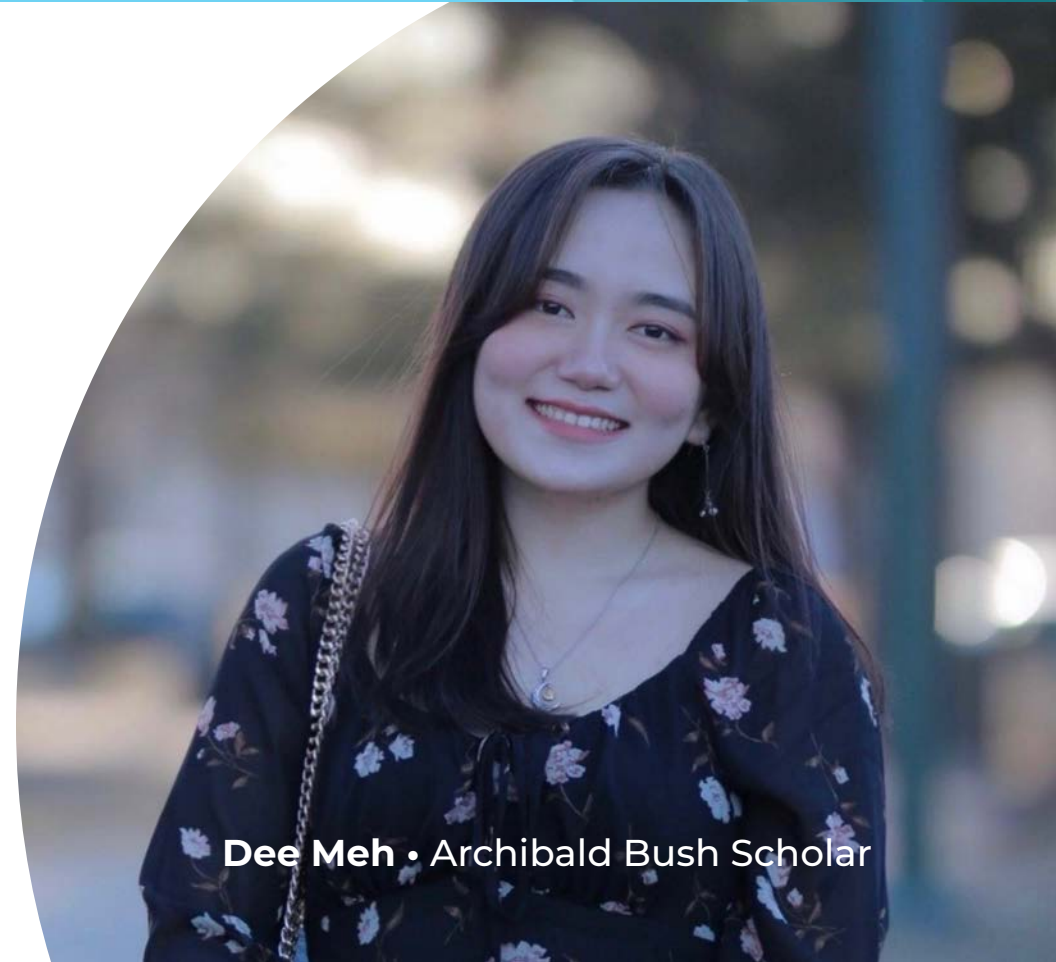
Harding High School
University of Minnesota - Twin Cities



MICHELLE XIONG

.....

Como Park Senior High School
University of Minnesota - Twin Cities



Dee Meh • Archibald Bush Scholar

Black Men Teach SCHOLAR

DONOR PARTNER SINCE 2021
SCHOLARS SUPPORTED: 2

.....

BLACK MEN TEACH TWIN CITIES

The mission of Black Men Teach is to recruit, prepare, place, and retain Black male teachers in Twin Cities elementary schools. At present, less than one percent of teachers in these schools are Black men. Yet research shows that a Black male student who has one Black male teacher in elementary school is 29 percent less likely to drop out. And with two Black teachers, he is 32 percent more likely to pursue postsecondary education.

Black Men Teach partners with multiple stakeholders to create viable pathways to the classroom, individually designed for each of our Fellows. Critical to this pathway are

scholarship opportunities to make college affordable. Black Men Teach relies on Wallin Education Partners because of its strong track record of supporting its scholars and their high graduation rates.

Paul and Beth Gunderson are honored to support Black Men Teach Wallin Scholars.

Donors • Paul and Beth Gunderson



MONTRE HADLEY

.....

Patrick Henry High School
Minnesota State University Mankato

Boston Scientific SCHOLARS

DONOR PARTNER SINCE 2013
SCHOLARS SUPPORTED: 20



.....

Boston Scientific transforms lives through innovative medical solutions that improve the health of patients around the world. As a global medical technology leader for more than 35 years, we

advance science for life by providing a broad range of high-performance solutions that address unmet patient needs and reduce the cost of healthcare.

Our Boston Scientific Scholars receive funding for their education, but our commitment goes far deeper. Participants in the program—who represent some of the most critically needed demographics in science and healthcare—gain access to internships, leadership and development

opportunities, and the ability to participate in the company's Employee Resource Groups. In doing so, Boston Scientific is investing in our future employees, future physicians, and future thinkers who will harness the powers of science to benefit humankind.



JOSEPH HOANG

.....

Como Park Senior High School
University of Minnesota - Twin Cities



AISHA OUTLAND

.....

Roseville Area High School
University of Minnesota - Twin Cities

Brian and Mia Sullivan SCHOLAR

DONOR PARTNER SINCE 2022
SCHOLARS SUPPORTED: 1

.....

Brian and Mia Sullivan are among a group of donors who have joined with Wallin Education Partners to sponsor scholarships and support students through their college years.

You are selected you as a Sullivan scholar because of your potential to be successful in college and in your career. We believe your motivation, experiences, and contributions to the community have prepared you for a great future!

Donors • Brian and Mia Sullivan



Makiah Carlisle

.....
Hope Academy
Northwestern College



WALLIN
EDUCATION PARTNERS

Where
Scholars
Rise

Cornwall SCHOLARS

DONOR PARTNER SINCE 2013
SCHOLARS SUPPORTED: 38

.....

Mary Ann and Looe Baker III are among a group of donors who have joined with Wallin Education Partners to sponsor scholarships and support students through their college years. The Bakers believe that education is critical for success in the workplace, and are proud to provide you with the help of a scholarship. The Bakers selected you as a Cornwall Scholar because of your potential to be successful in college and in your career. They believe your motivation, contributions to our community, and potential to achieve great things are inspiring. They stand behind you and are continually rooting for your success.

Donors • Mary Ann and Looe Baker III



SUMAYA AHMED

.....
Irondale Senior High School
University of Minnesota - Twin Cities



AVA BROWN

.....
Central High School
College of St. Benedict



DULCE SALAZAR

.....
Blaine High School
Minnesota State University Mankato



ANAHI SANCHEZ

.....
De La Salle High School
Macalester College



PA VANG

.....
Park Center Senior High School
University of Minnesota - Twin Cities



DAVID TRUJILLO-PANIAGUA

.....
Highland Park Senior High School
University of St. Thomas



JUSTIN VO

.....
Blaine High School
University of Minnesota - Twin Cities

Cornwell SCHOLARS

DONOR PARTNER SINCE 2002
SCHOLARS SUPPORTED: 172

.....

In 2002, we awarded our first Cornwell Scholarships. Since then, we have had the greatest pleasure from seeing our students attend college, graduate, and go out in this world bringing their unique talents and their education to get good jobs and to give back to our community.

We care deeply about this community and its future. There are so many young people with great potential who need a little support to help them achieve their goals. It has been such a pleasure for us to get to know students from a wide range of diverse backgrounds. We see their determination and motivation to do well in school so that they can get fulfilling jobs and have a positive impact on our community. It is a blessing for us to know and help these young scholars.

Donors • Joan and Ron Cornwell



ABDIRAHMAN IBRAHIM

.....

South High School
University of Minnesota - Twin Cities



DEMETRIA JONES

.....

North Community High School
St. Catherine University



SUWAYDA OSMAN

.....

Edison Senior High School
University of Minnesota - Twin Cities



WABASHA POTTER DIONNE

.....

South High School
Augsburg University



YOSEPH TEKLE

.....

South High School
University of Minnesota - Twin Cities



JULIA PRICE

.....

Washburn High School
University of Minnesota - Twin Cities



UDONXAI XIONG

.....

Patrick Henry High School
University of Minnesota - Twin Cities

Dixon SCHOLAR

DONOR PARTNER SINCE 2013
SCHOLARS SUPPORTED: 9



George H. Dixon and Marjorie “Peggy” Dixon moved to Minnesota in 1968 when George became President of the First National Bank of Minneapolis. Both immediately became involved in the larger community. Peggy and George served on many nonprofit boards. George was a director of a number of public companies and a Trustee of Carleton College for 25 years and Board Chair for five. He served as Deputy Secretary of the Treasury in the Ford Administration and returned to Minnesota to head First Bank System, a predecessor of US Bank.

Both George and Peggy were intellectually curious and personally adventuresome. Peggy had grown up sailing in Rhode Island, and after George’s retirement they had a sailboat built in England, and they and their children sailed it across the Atlantic to the Caribbean. Peggy was an accomplished gardener. George raised bees for 60 years and

read widely, including physics and astronomy. They were extremely generous people as well.

George chaired the search committee that brought Steve Lewis to Carleton as President in 1987. The Dixons were good friends and strong supporters of Steve and Judy Lewis at Carleton. The Lewises, whose parents believed in the importance of education, established this scholarship in their honor.

The Dixon Scholarship is in its seventh year of being awarded. Through the Lewises’ generosity, the new Dixon scholar joins five Dixon scholars and two Lewis-Frost scholars.

Donors • Steve and Judy Lewis



ROBEL AMDEMARIAM



Highland Park Senior High School
Carleton College

Donaldson SCHOLAR

DONOR PARTNER SINCE 2017
SCHOLARS SUPPORTED: 5

.....



Donaldson Company Inc. (NYSE: DCI), is a global leader in the filtration industry with sales, manufacturing, and distribution locations around the world. Donaldson’s innovative filtration technologies are designed to solve complex filtration challenges and enhance customers’ equipment performance.

Founded in 1966, the Donaldson Foundation strives to make a meaningful impact in our communities. We proudly

support programs and organizations that direct time and effort toward education. Program grants provided by the Donaldson Foundation impact a broad range of educational interests in our communities, including early childhood development, K-12, postsecondary, adult learner, and self-sufficiency education.

“Donaldson wants all children to see themselves in STEM,” said Allie Boyat, President of the Donaldson Foundation. “Education is the primary focus of the Donaldson Foundation so we are excited to work with Wallin Education Partners to provide this grant to help another, high-potential student pursue their interest in a STEM field.”



AUSTIN GIN

.....

Mounds View High School
University of Minnesota - Twin Cities

Enterprise SCHOLARS

DONOR PARTNER SINCE 2020
SCHOLARS SUPPORTED: 165

.....

Funding for the Enterprise Scholars is provided by the Enterprise Education Foundation, which was established to provide scholarships to academically qualified students from the Twin Cities area. We would like to especially acknowledge Vern Beck, who was the major contributor to our foundation. Vern left much of his estate to the Enterprise Education Foundation to help support a positive future for the young people of our community.

Our objective is to assist students from the Twin Cities area who are academically qualified, have financial need, and have demonstrated leadership skills while in high school. We support scholars with an interest in the study of business or STEM programs. Enterprise has partnered with Wallin Education Partners since 2009, supporting 158 scholars. We know that supporting students is an investment in young people's education that will make a difference in our community.



DUNCAN JOLY

.....

Roseville Area High School
University of Minnesota - Twin Cities



YER LEE

.....

John A Johnson High School
University of Wisconsin - River Falls



SAMUEL MEYERS

.....

Blaine High School
Minnesota State University Mankato



LEO MOUA

.....

Community Of Peace Academy
University of Minnesota - Twin Cities



KEVIN SALAYA-MOLINA

.....

Irondale Senior High School
University of Minnesota - Twin Cities



KASEN RANIERE

.....

Blaine High School
University of Minnesota - Twin Cities



SOFIE SCHEAR

.....

Hopkins High School
University of Wisconsin - Madison

Esther Johnson SCHOLAR

DONOR PARTNER SINCE 2008
SCHOLARS SUPPORTED: 12

.....

My mother, Esther Johnson, would have been a very good candidate for a Wallin Education Partners scholarship. From a poor farming family in southern Minnesota, she was oldest of seven children and first to graduate from high school. When it was time for her to continue her education, her mother became very ill and she was needed at home to care for her brothers and sisters. Mother was a genius at math and I know she would have thrived in college. I remember her with happiness and gratitude when a scholarship is given in her name.

Donor • Ardes Johnson



MICHAEL NGUYEN

.....

Irondale Senior High School
University of Minnesota - Twin Cities



Ettinger SCHOLARS

DONOR PARTNER SINCE 2016
SCHOLARS SUPPORTED: 36

.....

The Ettinger Scholars are sponsored by Jeff and LeeAnn Ettinger. They believe in the value of education and find it gratifying to help hard-working young people reach for their dreams. They live in Austin, Minnesota, and have four adult children.

Donors • Jeff and LeAnn Ettinger



EVAN FISHER

.....

Austin High School
University of Wisconsin - Milwaukee



BRIANNA KLOUSE

.....

Austin High School
Southwest Minnesota State University



LUCY MASARA

.....

Austin High School
University of Minnesota - Twin Cities



KADEN MURLEY

.....

Austin High School
University of Minnesota - Duluth



ELIZABETH OLESON

.....

Austin High School
Minnesota State University Mankato



MARION WEKE

.....

Austin High School
University of Minnesota - Twin Cities



Flaherty Family Foundation SCHOLAR

DONOR PARTNER SINCE 2021
SCHOLARS SUPPORTED: 2

.....



Flaherty Family Foundation

The Flaherty Family Foundation (FFF) began providing high school scholarships to high achieving students with economic need in 1990. Scholarships provide students access to faith-based, college prep partner high schools. Founded and funded by Mr. Ed Flaherty, the FFF has grown to support over 400 Flaherty Scholars in over 30 high schools in MN, DC, MD, VA, NJ, and MT each year. Flaherty Scholars undergo an extensive application process and are selected during

the spring of their eighth grade year; their Flaherty Scholar journey begins in ninth grade. In addition to scholarship dollars, students engage in programming and mentorship that leads to college and career readiness upon graduation. In 2019, the FFF expanded its mission by setting an ambitious goal that all Flaherty Scholars would graduate from college in four years or less with \$22,000 or less in student loans.

The FFF is committed to supporting Scholars beyond high school with access to continued mentorship and an affordable college education where they are able to graduate with as little debt as possible. Our partnerships with Wallin Education Partners, postsecondary institutions, foundations, and private donors are the key to accomplishing this commitment.

In this new partnership with Wallin Education Partners, we are proudly supporting the following Flaherty Scholar in their pursuit of reaching their highest potential.

Donor • Ed Flaherty



SOPHIA SMITH

.....

Bethlehem Academy
Hamline University



G. Robert Strauss Jr. SCHOLAR

DONOR PARTNER SINCE 2016
SCHOLARS SUPPORTED: 4

.....

This scholarship is established in memory of my best friend, G. Robert “Bob” Strauss, who was murdered in Cincinnati in a burglary gone wrong in his own home. Bob was only 27 at the time. A graduate of Harvard University and a recipient of an MBA from the Darden School of Business, Bob was destined for tremendous achievements in this world before his life was taken from him. Bob and I grew up together in Buffalo, New York, where we attended Nichols School, a demanding middle and high school. We became fast friends in the fifth grade and this friendship continued up until that fateful day in August 1988. This scholarship embodies all the potential that education has to offer and is one of the many ways that I have chosen to keep the memory of my friend alive.

Donors • Ted and Kathy Truscott



JIMMY THAO

.....

John A Johnson High School
Minnesota State University Mankato

Halverson SCHOLARS

DONOR PARTNER SINCE 2018
SCHOLARS SUPPORTED: 7

.....

We both came from families who valued education and we spent our careers in educational fields—Bruce as an elementary school teacher and Helen as a reference librarian in public libraries. We were fortunate that when we finished high school, a college education was financially feasible for many graduates. Unfortunately, the current high costs associated with educational programs beyond high school act as a barrier for many students so that they may not further their formal education or graduate with a lot of debt. Our goal is to help a motivated student achieve their dream of an advanced education that will open their life to many exciting opportunities.

Donors • Helen and Bruce Halverson



EFTU FEYISA

.....

Tartan Senior High School
Xavier University of Louisiana



PAW SOE

.....

Harding High School
St. Catherine University



Hawn SCHOLAR

DONOR PARTNER SINCE 2020
SCHOLARS SUPPORTED: 2

.....

Although life is not fair, one is sometimes given an opportunity to help level the odds. Wallin, over and over, provides such an opportunity, resourcing financial and educational support for students facing barriers to college success. It is a privilege to be given a chance to partner with the organization to offer a way forward to such talented, deserving individuals as the students served by Wallin Education Partners.

Donors • Liz and Van Hawn



OLIYAH TENGBEN

.....

Park Center Senior High School
University of Minnesota - Twin Cities

Henry SCHOLAR

DONOR PARTNER SINCE 2014
SCHOLARS SUPPORTED: 4

.....

John and Kelly Henry were both born and raised in Minneapolis and are graduates of the Minneapolis Public Schools. Giving back to the community of Minneapolis and in particular the individual students of the Minneapolis Public School system has been a philanthropic priority for the Henrys. Their main goal with the Henry Scholar is to help Minneapolis high school graduates find success in college and beyond.

The Henrys found Wallin Education Partners while looking for a program that assists with helping first generation college students graduate from college and they strongly believe that Wallin's college completion program achieves this. Partnering with the Wallin Education Partners program has enabled the Henrys to make an impact with some of the young people they desire to reach.

John and Kelly live in Uptown Minneapolis with their three young kids. They all look forward to getting to know their scholar through the coming years.



JINDA LOR

.....

Hmong College Prep Academy
Augsburg University



Holman SCHOLARS

DONOR PARTNER SINCE 2004
SCHOLARS SUPPORTED: 166



Tom and Kim Holman are the founders and Directors of the Morning Foundation, a private foundation established in 1996 to focus on children's education, health, and social services. Previously, Tom was an executive with Dell Computer Corporation and Kim was a senior manager with the Texas Department of Health. Tom and Kim have been active with a number of nonprofit organizations and enjoy spending time with their four daughters. Tom and Kim support scholars through Wallin Education Partners because they believe that education is not only important for individuals, it is also important for our society as a whole. Their hopes are that their scholars will find success in school and in life through determination, hard work, and support from others and that their scholars will pay it forward by helping others throughout their own lives.

Donors · Tom and Kim Holman



LATRESE JOHNSON



Highland Park Senior High School
Howard University



NANG THAO



John A. Johnson High School
University of Minnesota - Twin Cities

Jackson SCHOLARS

DONOR PARTNER SINCE 2015
SCHOLARS SUPPORTED: 15

.....

Darren and Terry Jackson are the founders and Directors of the Jackson Family Foundation, a private foundation established in 1995 to address the disparities and needs of the underserved and marginalized in our society with a primary focus on education and social services. Darren is the Chairman of the Board of Cree Inc. and All-In Milwaukee. Previously, he served as CEO of Advance Auto Parts, CFO of Best Buy and Nordstrom. Terry serves as a community volunteer for Second Stork and All-In Milwaukee, Previously, Terry was an emergency room nurse at Children’s Hospital of Wisconsin. Darren and Terry are active with a number of nonprofit organizations including Marquette University and the Drexel Fund. They have three grown children and one granddaughter. Darren and Terry support scholars through Wallin Education Partners and founded All-In Milwaukee because of their passion for social justice and the extraordinary outcomes these programs provide as a foundation for a meaningful life. Their hopes are that the

scholars are catalysts for positive and sustainable improvements for their families, local communities, and society as a whole.

Donors · Darren and Terry Jackson



LAURA KOONTZ

.....

Saint Agnes High School
University of Wisconsin - River Falls



LIVIA SCHULZ

.....

Bethlehem Academy
University of Minnesota - Duluth

Julie and Amara Andrus SCHOLARS

DONOR PARTNER SINCE 2022
SCHOLARS SUPPORTED: 6

.....

Julie and Amara are mother and daughter who believe that education opens doors, and improves society as a whole through individual growth. We both value our own education so highly and want to work to ensure that high quality education is attainable for all young people. We are excited and proud to sponsor our first Wallin Scholars this year.

Donors • Julie and Amara Andrus



KORSHA COUCH

.....

Washburn High School
University of Minnesota - Twin Cities



DAMENICA ELLIS

.....

Creative Arts High School
Howard University



TA'NAYIAH HAMPTON

.....

Coon Rapids High School
University of Minnesota - Twin Cities



SULTAN KOROSO

.....

Wellstone International High School
University of Minnesota - Twin Cities



HAYAT MUHUMED

.....

Roosevelt High School
University of Minnesota - Twin Cities



KA XIONG

.....

Coon Rapids High School
Augsburg University



Kirwin SCHOLAR

DONOR PARTNER SINCE 2016
SCHOLARS SUPPORTED: 6

.....

Paul and Jill Kirwin launched the Kirwin Scholarship as part of their commitment to help talented and aspiring young women achieve their vision for a brighter future through higher education. They believe firmly in the power of education and hard work to create opportunity and advancement for all Americans.

After a five-year battle with cancer, Jill passed away in 2020. She took great pride in meeting and supporting our scholars over the years. The next generation of Kirwins, Lexi and Tina, look forward to continuing the Kirwin Scholarship well into the future.

Donors • Paul Kirwin



PAKOU MOUA

.....

SPPS Online High School
University of Minnesota - Twin Cities



Maybloom-Suzukamo SCHOLARS

DONOR PARTNER SINCE 2016
SCHOLARS SUPPORTED: 17

.....

The Maybloom-Suzukamo Scholarship was established to honor Iris Maybloom, a gifted and inspirational American History teacher and counselor in Los Angeles. She helped generations of students prepare for college, particularly students of color who had no clear roadmap of how to get there. Her students learned not just to memorize dates, names, and places but to see the real people of history, both the famous and the ordinary. Her teaching method was one part standup comedy, one part Socratic inquiry, and one part Spanish Inquisition, as we were prodded, cajoled, and terrorized into coughing up an original thought.

Iris introduced us to “The Scarlet Letter,” “The Grapes of Wrath,” and “The Great Gatsby.” For some of us, it was the first real literature we’d ever read.

Her tools were the handwritten college essay exam and typed, footnoted research papers that required bus rides to

university libraries. By the end of the semester, we learned how good writing and critical thinking were inextricably tied.

But most importantly, Iris taught her students to dream bigger. She told us not to stare at the daunting cost of college but to focus on the vistas beyond. College wasn’t a destination in and of itself but a jumping-off point.

In that spirit, we award these scholarships to a new generation of students of color. We hope these awards help them find their own vistas and enjoy the view before they make the next leap in their lives.

Donors • Karen and Les Suzukamo



SHYLYNNE CHA

.....

John A Johnson High School
University of Minnesota - Twin Cities



SHAMYA FRANKLIN

.....

Creative Arts High School
Carleton College



CHARLES GADEA DOMINGUEZ

.....

John A Johnson High School
University of Minnesota - Twin Cities



KONGMENG THAO

.....

Harding High School
University of Minnesota - Twin Cities



DARTANYAN VANG

.....

Harding High School
Minnesota State University Mankato

McDonagh-Sullivan SCHOLAR

DONOR PARTNER SINCE 2019
SCHOLARS SUPPORTED: 4

.....

Our Wallin scholarship is named after our parents, Bernard and Katherine McDonagh (Irish immigrants) and John and Mary Sullivan (first-generation Irish-Americans). Only one of our parents was able to complete high school due to economic conditions during the Great Depression.

This did not stop them, however, from realizing the importance of a college education for success in America. In spite of severe financial limitations, they saw all of their children graduate from college (debt-free) and go on to succeed in a wide variety of professions. It is in thanks to them for their foresight and sacrifice in endowing us with the means to succeed that we have named our scholar program in their honor.

Donors • Bernard and Sheila McDonagh



LIDYA BERHANE

.....

Cretin-Derham Hall
Hamline University



Medtronic SCHOLARS



Medtronic
FOUNDATION

DONOR PARTNER SINCE 2008
SCHOLARS SUPPORTED: 179



The Medtronic Foundation focuses on improving lives for underserved populations worldwide, as well as supporting communities where Medtronic employees live and give. Our vision is a world where every person has equitable access to quality healthcare and education. We are proud to support the Wallin Education Partners, founded by former Medtronic CEO Win Wallin. For years, this program has helped spark

future generations of leaders, healthcare professionals, and science innovators that will make the world a healthier place to live. We see support for work like this as one of the ways the Medtronic Foundation strives to improve the lives of communities around the world.



KEVIN ALATOMA JUAREZ

.....

Hiawatha Collegiate High School
St. Olaf College



ANALILIA AYALA

.....

Tartan Senior High School
Hamline University



ALEXANDER GARDUNO GARCIA

.....

Brooklyn Center High School
University of Minnesota - Twin Cities



TINA LE

.....

Harding High School
St. Catherine University



CONG NGUYEN

.....

Hopkins High School
University of Minnesota - Twin Cities



JOLEENA VANG

.....

Anoka High School
University of Minnesota - Twin Cities

Minnesota Opportunity SCHOLARS

DONOR PARTNER SINCE 2012
SCHOLARS SUPPORTED: 65



The Minnesota Opportunity Scholarship was established by Sara and Bob Lumpkins in 2012. The Lumpkins believe strongly in the value of higher education and are long-time admirers of the Wallin family for creating the program. They especially value Wallin Education Partners' sustained advisory support to help ensure a successful university experience for their scholars.

Donors • Bob and Sara Lumpkins



ELIJAH MIRELES



Blaine High School
University of Minnesota - Twin Cities



MAX YANTES



Blain High School
University of Minnesota - Twin Cities



Mulrooney, Larson and Eldred SCHOLARS

DONOR PARTNER SINCE 2022
SCHOLARS SUPPORTED: 4



Mike Mulrooney has joined with Wallin Education Partners to sponsor scholarships and support students through their college years.

Mike Mulrooney selected you as a Mulrooney, Larson, Eldred scholar because of your potential to be successful in college and in your career. They believe your motivation, experiences, and contributions to the community have prepared you for a great future!

Donors • Mulrooney, Larson and Eldred



NAHOME LANTYDERU



Highland Park Senior High School
Carleton College



VANESSA LOR



Fridley High School
University of Minnesota - Twin Cities



MAMTA MUKHIYA

.....

Roseville Area High School
University of Minnesota - Twin Cities



MAYRA RAMOS-GARCIA

.....

Osseo High School
Metropolitan State University



Nellie Griswold Francis & William T. Francis SCHOLARS

DONOR PARTNER SINCE 2021
SCHOLARS SUPPORTED: 4

.....

In 1914, Nellie Griswold Francis founded the only black women's suffrage organization in Minnesota. Over the course of several years, she was a pioneer in Minnesota for voting rights and racial justice in addition to being an accomplished singer and local church leader. William Francis was a railroad lawyer early in his career, later establishing a successful private law practice. He was a Republican and ran unsuccessfully for city and state-wide offices. Also an accomplished singer, he and Nellie married in 1893. They lived in St. Paul until 1927 when William Francis was appointed Minister and Consul to Liberia, West Africa. The first African-American diplomat from Minnesota, William investigated and reported on Liberian government complicity in the forced labor of Liberian men. Tragically, William died in Monrovia of yellow fever in 1929.

Nellie and William are further distinguished by an experience they endured while living in St. Paul. In 1925, they moved from the Rondo neighborhood to the Macalester-Groveland neighborhood, where they experienced direct, virulent racial hatred at the hands of a self-identified neighborhood improvement association. They were "encouraged" by white neighbors to move out of the neighborhood with cross-burnings and protests at their home. The Francises did not yield. They continued to live in the neighborhood for more than two years before William was appointed to his diplomatic post. Today, Macalester-Groveland continues to be a popular neighborhood in St. Paul. It is approximately 90 percent white, with home values at approximately 175 percent of the city's median. It is hoped that Nellie Griswold and William Francis will inspire scholars to aim high and persevere. Their story also reminds us all to give thoughtful consideration to our neighbors, those Minnesotans close to us, both geographically and on the historical timeline.

Donors • Frank Zink and Katie Reish



MISKI AHMED

.....

Como Park Senior High School
University of Minnesota - Twin Cities



FAITH KARPAH

.....

Brooklyn Center High School
University of St. Thomas



NorthStar Education Finance SCHOLARS



DONOR PARTNER SINCE 2014
SCHOLARS SUPPORTED: 679



NorthStar Education Finance Inc. (NEF) is dedicated to helping students obtain an affordable education. It continues to support its other charitable purposes, which include: foster aid as well as encouraging and assisting students—especially first-generation students—in pursuing higher education. Supporting its mission, the company provides students who have existing loans issued under its Total Higher Education Loan Program (THE Loan Program) the lowest possible financing cost. In particular, NEF returns 90 percent of its excess revenues to student borrowers via the THE Repayment Bonus Program.

From 1996 to 2010, NEF was the 12th largest lender of postsecondary education loans in the United States. During that time, NEF made over \$7.5 billion in education loans. During its tenure as an active lender of education loans, NEF paid over \$125 million in origination fees on behalf of student borrowers to the U.S. Department of Education. To date, NEF has returned to its student borrowers over \$110 million in excess profits, allowing borrowers to more quickly pay down their education loan balances. NEF reserves an additional 10 percent of excess reserves for philanthropic purposes.

NEF's ongoing philanthropic goals are to:

- Help students pay down their existing balances by using 90 percent of its excess reserves to pay down their outstanding balances
- Continue to provide financial literacy education and assistance to these student loan borrowers to enable them to successfully repay their loans, and lead more productive lives
- Manage its financing as necessary to maximize the THE Repayment Bonus paid to borrowers
- Provide scholarship grants to other organizations to further NEF's educational mission

In support of its mission, NEF joined with Wallin Education Partners in 2014 to sponsor scholarships. In addition, NEF provides the Grad Ready financial literacy program to all current and incoming Wallin/NorthStar Scholars. Wallin Education Partners selects NorthStar Scholars based on their potential to be successful in college and in their future careers. Factors also considered are the scholar's motivation, contributions to the community, and their willingness to take rigorous classes in preparation for a successful college experience.



HANAN ABDI

.....
Edina High School
Hamline University



ILHAN ABDI

.....
Saint Louis Park High School
University of Minnesota - Twin Cities



JAHEIM ABDULLAH

.....
North Community High School
University of Minnesota - Twin Cities

NorthStar Education Finance SCHOLARS



HANNA ADAN

.....

Como Park Senior High School
University of Minnesota - Twin Cities



SAMANTHA ANDERSON

.....

Cristo Rey Jesuit High School
College of St. Benedict



HADA ABUKAR

.....

Columbia Heights High School
College Pending



ASHLEY TRACY ARYIKU

.....

Como Park Senior High School
College of St. Benedict



ESSA AMIN

.....

Edina High School
University of Minnesota - Twin Cities



HANNAH BEDE

.....

Park Center Senior High School
University of Minnesota - Twin Cities



DAFNE BORRAYO

.....
Columbia Heights High School
University of Minnesota - Twin Cities



SEBASTIAN CALDERON

.....
Columbia Heights High School
University of Minnesota - Twin Cities



JAQUELYN BRAVO

.....
Cristo Rey Jesuit High School
University of St. Thomas



JESSICA CALLE MARTINEZ

.....
Hiawatha Collegiate High School
St. Olaf College



VINCENT BUI

.....
Highland Park Senior High School
University of Wisconsin - Madison



SHANA CHANG

.....
Como Park Senior High School
Augsburg University

NorthStar Education Finance SCHOLARS



SANDRA CHAUCA

.....

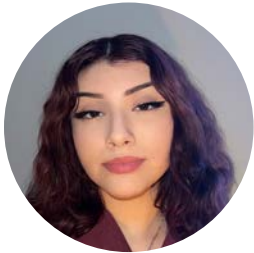
Cristo Rey Jesuit High School
St. Catherine University



TENZEN CHOEYANG

.....

Saint Lous Park High School
University of Minnesota - Twin Cities



JOCELYN CHAVEZ SALAZAR

.....

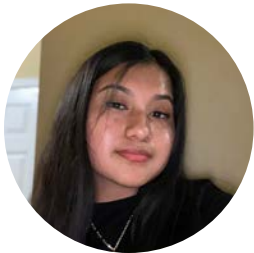
Cristo Rey Jesuit High School
St. Olaf College



TAMIA CONSONERY

.....

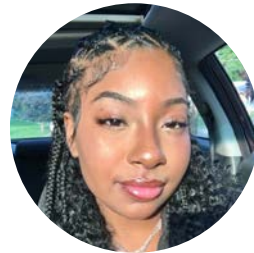
Community of Peace Academy
St. Catherine University



MARILYN CHIQUI LLANGARI

.....

Cristo Rey Jesuit High School
University of Minnesota - Twin Cities



TIA CONSONERY

.....

Community of Peace Academy
St. Catherine University



NorthStar Education Finance SCHOLARS



Essa Amin
NorthStar Education Finance Scholar



JENNIFER CURILLO

.....
Cristo Rey Jesuit High School
University of Minnesota - Twin Cities



ILHAAN DHEGADUB

.....
Park Center Senior High School
Macalester College



ALEX DIAZ SALDIVAR

.....
Cristo Rey Jesuit High School
University of Minnesota - Twin Cities



SAMERA ELM

.....
Saint Louis Park High School
University of Minnesota - Twin Cities



ELDER ESPINOZA

.....
Community Of Peace Academy
University of Minnesota - Twin Cities



PATRICIA EVANS

.....
Cristo Rey Jesuit High School
Bethel University



RIA HAJI

.....
Roosevelt High School
University of St. Thomas



AKILI HARCUS

.....
Patrick Henry High School
Xavier University of Louisiana



NAJWA HASSAN

.....
North High School
University of Wisconsin - Madison

NorthStar Education Finance SCHOLARS



GABE HERNANDEZ

.....

Cristo Rey Jesuit High School
University of Minnesota - Duluth



NAIMA IBRAHIM

.....

Edison Senior High School
University of Minnesota - Twin Cities



CHRISTINA HOANG

.....

Washington Technical Magnet School
University of Minnesota - Twin Cities



ANASTASIA IOGOVA

.....

Highland Park Senior High School
University of St. Thomas



RAIN HTOO

.....

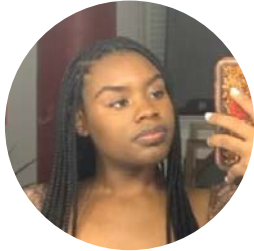
Washington Technical Magnet School
University of Minnesota - Twin Cities



HAYAT ISMAIL

.....

Burnsville Senior High School
Concordia University St. Paul



AZARI JACKSON

.....

North Community High School
Hamline University



TIMYA JONES

.....

North Community High School
Augsburg University



Q JORDAN

.....

North Community High School
University of St. Thomas



JACQUELINE JUAREZ CANO

.....

Cristo Rey Jesuit High School
University of Minnesota - Twin Cities



GODWIN KASONGOMA

.....

Columbia Heights High School
University of Minnesota - Twin Cities



NADIA KEWDEN

.....

Ubah Medical Academy
University of Minnesota - Twin Cities

NorthStar Education Finance SCHOLARS



Najwa Hassan
NorthStar Education Finance Scholar



FATIMA KOROMA

.....

Robbinsdale Cooper High School
Carleton College



OLIVIA KOSTECKI

.....

John F Kennedy Senior High School
University of Wisconsin - Madison



JENEL LAZO

.....

Cristo Rey Jesuit High School
University of Minnesota - Rochester



ROYAL LEE

.....
Como Park Senior High School
University of Minnesota - Twin Cities



ZENG LEE

.....
Harding High School
University of Wisconsin - Green Bay



MARINA-GIFT LEKE

.....
Coon Rapids High School
St. Olaf College



CHLOE LO

.....
Champlin Park High School
Augsburg University



JEFFREY LOPEZ-MARTINEZ

.....
Roosevelt High School
University of Minnesota - Rochester



FELICIA LOR

.....
Park Center Senior High School
Drake University

NorthStar Education Finance SCHOLARS



JOHN LOR

.....

Community Of Peace Academy
St. John's University



MARI MARQUEZ CASTREJON

.....

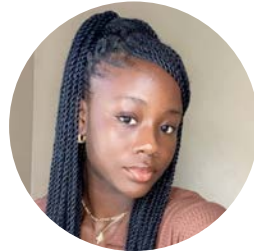
Cristo Rey Jesuit High School
University of Minnesota - Twin Cities



SEE LOR

.....

Brooklyn Center High School
University of Minnesota - Twin Cities



KIERRA MENSAH

.....

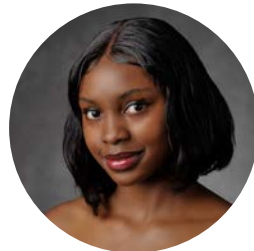
Park Center Senior High School
Augsburg University



SAFA M HASSAN

.....

Burnsville Senior High School
University of Minnesota - Twin Cities



PRISCILE MITEO

.....

Saint Louis Park High School
University of St. Thomas



IKRAM MOHAMED

.....

Como Park Senior High School
University of Minnesota - Twin Cities



SULEIKA MOHAMED

.....

Roseville Area High School
University of Minnesota - Twin Cities



YUSUF MOHAMED

.....

Irondale Senior High School
University of Minnesota - Twin Cities



Felicia Lor
NorthStar Education Finance Scholar

NorthStar Education Finance SCHOLARS



AHMED MOHAMMED

.....

Coon Rapids High School
University of St. Thomas



LOURDES MOUA

.....

John A Johnson High School
University of Minnesota - Twin Cities



YASMIN MORAD

.....

Columbia Heights High School
University of Minnesota - Twin Cities



PA CHIA CE MOUA

.....

Roseville Area High School
St. Olaf College



YAKELYN MORALES

.....

Cristo Rey Jesuit High School
University of Minnesota - Twin Cities



YORDANOSE MULAT

.....

Robbinsdale Cooper High School
University of Minnesota - Twin Cities



NEHEMIE NGELEKA

.....

Saint Louis Park High School
Hamline University



LYNN NGUYEN

.....

Roseville Area High School
University of Minnesota - Twin Cities



CINDERELLA NWE

.....

Washington Technical Magnet School
Hamline University



FADUMO OMAR

.....

Columbia Heights High School
University of Minnesota - Twin Cities



JOSHUA ORTEGA-CRUZ

.....

Champlin Park High School
University of Minnesota - Twin Cities



GISSELLE ORTIZ

.....

Cristo Rey Jesuit High School
University of Minnesota - Twin Cities

NorthStar Education Finance SCHOLARS



VATANA OUL

.....
Burnsville Senior High School
Augsburg University



JAVIER PALMA

.....
Highland Park Senior High School
University of St. Thomas



KRISTIN PACHECO TENESACA

.....
Cristo Rey Jesuit High School
University of St. Thomas



JEFFREY PAREDES

.....
Cristo Rey Jesuit High School
University of St. Thomas



TENZIN PHUNTSOK

.....

John F Kennedy Senior High School
University of Minnesota - Twin Cities



CHRIS PLIEGO RODRIGUEZ

.....

Cristo Rey Jesuit High School
Carleton College



MAOLI QUEVEDO

.....

Cristo Rey Jesuit High School
Macalester College



Cinderella Nwe
NorthStar Education Finance Scholar

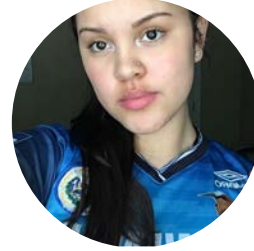
NorthStar Education Finance SCHOLARS



PA REH

.....

Como Park Senior High School
University of Minnesota - Twin Cities



TATY SALGUERO MONGE

.....

Community Of Peace Academy
St. Catherine University



SAE REH

.....

Como Park Senior High School
Augsburg University



DIADOU SALL

.....

Cristo Rey Jesuit High School
St. Catherine University



MAX ROUILLARD-HORNE

.....

Harding High School
St. Olaf College



CHRISTIAN SANCHEZ

.....

Richfield Senior High School
Augsburg University



Where
Scholars
Rise



Where
Scholars
Rise

NorthStar Education Finance SCHOLARS



ISABEL SANCHEZ

.....

Richfield Senior High School
Hamline University



KAYLAH SMITH

.....

Anoka High School
University of Minnesota - Twin Cities



LAH SHEE

.....

John A Johnson High School
University of Minnesota - Twin Cities



TJ SOMSACKSY

.....

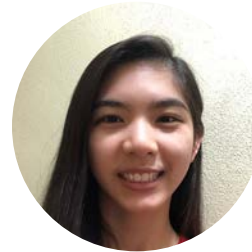
John F Kennedy Senior High School
Hamline University



ELAINE SMALL

.....

Creative Arts High School
St. Catherine University



VERONICA TAN

.....

Roseville Area High School
University of Minnesota - Twin Cities



NOVILAB TESFAHIWET

.....

Highland Park Senior High School
Metropolitan State University



RYNN TETTER

.....

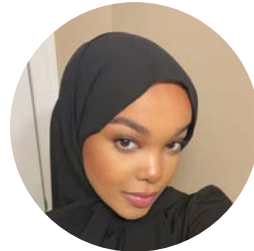
Harding High School
University of Wisconsin - River Falls



PA DER THAO

.....

John A Johnson High School
Minnesota State University Moorhead



KHADIJA TOBE

.....

Park Center Senior High School
University of Minnesota - Twin Cities



NICK TORMA

.....

Central High School
University of Minnesota - Twin Cities



ALEJANDRO VALDEPENNA-SEGURA

.....

Cristo Rey Jesuit High School
St. Olaf College

NorthStar Education Finance SCHOLARS



GAO NOU VANG

.....

Harding High School
Augsburg University



TONG VANG

.....

Robbinsdale Cooper High School
Metropolitan State University



GOSHOUA VANG

.....

Patrick Henry High School
Augsburg University



VALERIE VANG

.....

John A Johnson High School
University of Minnesota - Twin Cities



NHIA VANG

.....

Champlin Park High School
University of Minnesota - Twin Cities



INGRID VAZQUEZ

.....

Cristo Rey Jesuit High School
St. Olaf College



NorthStar Education Finance SCHOLARS



RUDY VERGARA

.....

Cristo Rey Jesuit High School
St. Olaf College



CHI VUE

.....

Harding High School
University of Minnesota - Twin Cities



EDWIN VERGARA ARPISTA

.....

Cristo Rey Jesuit High School
Dunwoody College of Technology



BELLA WILLIAMS

.....

John F Kennedy Senior High School
Minnesota State University Mankato



JENNIFER VO

.....

Roseville Area High School
Augsburg University



CARMILLA WILSON

.....

North Community High School
Xavier University of Louisiana



KIMBERLY XIONG

.....

North High School
University of Minnesota - Rochester



ANINA YANG

.....

Community Of Peace Academy
Hamline University



MICHELLE XIONG

.....

Central High School
University of Minnesota - Twin Cities



EMILY YANG

.....

Community of Peace Academy
Augsburg University



MOUA TIA XIONG

.....

Como Park Senior High School
Augsburg University



FUTCHI YANG

.....

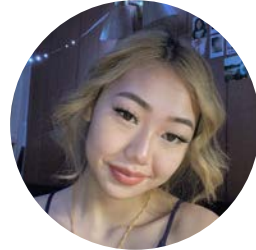
Harding High School
St. Olaf College

NorthStar Education Finance SCHOLARS



NADALEANE YANG

.....
Harding High School
University of Mankato



SA YANG

.....
North High School
Augsburg University



PANHIA YANG

.....
Park Center Senior High School
Augsburg University



SHAUNA YANG

.....
North High School
St. Catherine University



Piper Sandler SCHOLARS



DONOR PARTNER SINCE 2014
SCHOLARS SUPPORTED: 12



Piper Sandler is committed to increasing education opportunities for Black, indigenous, and people of color (BIPOC) communities, creating development and employment opportunities and access that these students might not otherwise have.

Piper Sandler Companies (NYSE: PIPR) is a leading full-service investment bank and asset management firm serving clients in the U.S and internationally. Founded in 1895, the firm is headquartered in Minneapolis with offices across the U.S. and in Aberdeen, London, and Hong Kong. Piper Sandler offers a full suite of products to serve our clients' business lifecycle needs, geographic reach in a global market, and deep expertise in our core sectors.

Piper Sandler is among a group of donors that have joined with Wallin Education Partners to sponsor scholarships and support students through their college years. Piper Sandler Scholars are selected because of their potential to be successful in college and in their chosen career. Their motivation, contributions to the community, and willingness to take rigorous classes will prepare scholars for a successful college experience.



TENNEH AMARA

.....

Robbinsdale Cooper High School
University of Minnesota - Twin Cities



NAAMI BEREKET

.....

Saint Louis Park High School
University of Minnesota - Twin Cities



SAOLA SANCHEZ RESENDIZ

.....

Roosevelt High School
University of St. Thomas



Ravich SCHOLAR

DONOR PARTNER SINCE 2013
SCHOLARS SUPPORTED: 6

.....

Nelson Mandela famously said: "Education is the most powerful weapon you can use to change the world." Our support of talented young people through a Ravich Scholarship expresses our belief in the power of education and our confidence in the promising future of our scholars. The Ravich Scholar is sponsored by Paul and Jeanne Ravich.

Donors • Jeanne and Paul Ravich



DROW WILSON

.....

North Community High School
College Pending

Richard F. McNamara SCHOLAR

DONOR PARTNER SINCE 2021
SCHOLARS SUPPORTED: 2

.....

Richard McNamara was a successful entrepreneur and credited his success greatly to a football scholarship he received to the University of Minnesota in 1954. The foundation is now run by his daughter, Emily McNamara. In memory of her father, Emily has continued to support causes that give people opportunity through education. In addition to her support for educational causes, Emily has also placed a great significance on women's health advocacy and disease research. Emily is happy to award this scholarship to such deserving young women who have proven themselves as strong students with bright futures ahead.

Donor • Emily McNamara



LISA AMANOR

.....

Champlin Park High School
University of Wisconsin - Madison

Robert and Ardis James Foundation SCHOLARS

DONOR PARTNER SINCE 2017
SCHOLARS SUPPORTED: 28



The Ruth A. and Raymond A. Reister Charitable Trust was established by Ruth Reister at the time of her death. Both Ruth and Ray were lawyers and held a strong belief in the value of education both for the benefit of the individual and for its importance to a free, democratic society. Ray practiced law with a major law firm in the Twin Cities and devoted a great deal of time and effort to local charitable causes. Ruth entered the legal profession at a time when it was rare for a woman to pursue a legal career. She became a champion for women in the legal profession and supported a number of educational and charitable causes. Although the Reisters did not have a family, they often provided financial support for young people to attend college. The Reister Charitable Trust is continuing the Reisters commitment to providing financial support to enable others to achieve a college education by supporting a scholar through Wallin Education Partners.



EDNA ABDULLAHI



South High School
Hamline University



FAAYA ADEM



Fair School Downtown
University of Minnesota - Twin Cities



LAURA CARRION

.....

Burnsville Senior High School
Bethel University



GRACIA LUMPPIO

.....

Brooklyn Center High School
Bethel University



BEE SAN EL-KHATIB

.....

Blaine High School
University of Minnesota - Twin Cities



ALLISON TRAN

.....

Mounds View High School
Carleton College



ANGELINA KONG

.....

North High School
Carleton College



JANEFRANCES UMEZ

.....

Burnsville Senior High School
College of St. Scholastica

Robinson Kurkowski SCHOLAR

DONOR PARTNER SINCE 2022
SCHOLARS SUPPORTED: 1

.....

Angie (Robinson) and Jim (Kurkowski) had careers as Electrical Engineers, mostly in the medical field, in the Twin Cities. They have established this scholarship to give to others the same educational advantages they have been able to give to their children. Clear inequalities in our society may be best addressed by enabling others an opportunity where there may previously have been few. They are particularly interested in supporting the STEM fields where inequalities seem to be even more pronounced and believe STEM fields would benefit from greater diversity. They hope that their scholarship is the foundation that the recipients may some day be positioned to similarly give back to their community.

Donors • Angie Robinson and Jim Kurkowski



LAICHIA VANG

.....
Roseville Area High School
University of Minnesota - Twin Cities

Ronald SCHOLAR

DONOR PARTNER SINCE 2007
SCHOLARS SUPPORTED: 8

.....

The Ronald Scholarship is named for my father, a man who was the epitome of someone who believed in higher education and in helping others no matter the time of day or night. Inspiration and good advice, in addition to financial help, are the models that gave me a path to follow as I saw the impact he had on many individuals and families.

Beyond helping college students in Minnesota because I was a teacher in Minneapolis, my interest lies in helping children in Ethiopia through Holistic Ministry of Children of the Horn of Africa (HMCHA), where I am the sponsorship coordinator and travel once or twice a year encourage and help strengthen our program there. Through education for all our neighbors all over the world we can help lift future generations out of poverty and change lives. The Ronald Scholars over the years have made me proud to be proud of all of them.

Donor · Carol Pfleiderer



ELI ZHAGNAY ANGAMARCA

.....

Columbia Heights High School
University of Minnesota - Twin Cities

Ruth and Raymond Reister SCHOLARS

DONOR PARTNER SINCE 2018
SCHOLARS SUPPORTED: 6

.....

The Ruth A. and Raymond A. Reister Charitable Trust was established by Ruth Reister at the time of her death. Both Ruth and Ray were lawyers and held a strong belief in the value of education both for the benefit of the individual and for its importance to a free, democratic society. Ray practiced law with a major law firm in the Twin Cities and devoted a great deal of time and effort to local charitable causes. Ruth entered the legal profession at a time when it was rare for a woman to pursue a legal career. She became a champion for women in the legal profession and supported a number of educational and charitable causes. Although the Reisters did not have a family, they often provided financial support for young people to attend college. The Reister Charitable Trust is continuing the Reisters commitment to providing financial support to enable others to achieve a college education by supporting a scholar through Wallin Education Partners.



EVELYN LARA

.....

Anoka High School
College of St. Benedict



PAUL NGUYEN

.....

Central High School
Macalester College

Scherer and Imholte SCHOLAR

DONOR PARTNER SINCE 2022
SCHOLARS SUPPORTED: 1

.....

Rachael Scherer and Stephen Imholte are long-time supporters of primary and secondary education through Ascension Catholic Academy and Banyan Foundation/ DeLaSalle scholarships. We've also hosted multiple high school exchange students from various foreign countries (including Jordan, China, and Brazil). It is a natural progression to take our belief in the power of education to the next level by sponsoring our first Wallin Scholar this year.

We have a personal connection to the Wallin program. Rachael met Win Wallin in 1990 when he was CEO of Medtronic and she was an aspiring med-tech stock analyst. Win was larger than life, funny, thoughtful and a natural teacher. Eventually, Win retired and Rachael joined Medtronic Investor Relations. Once a year until Win's death in 2010, they would meet over lunch to discuss the latest Medtronic news. Win always had so much wisdom to share. And Maxine's passion for library science is legendary.

We are proud to continue Win and Maxine's legacy with the Scherer-Imholte scholarship.

Donors • Rachael Scherer and Stephen Imholte



PAULINA ZHANG

.....

Park Center Senior High School
University of Minnesota - Twin Cities

Schulze Family Foundation SCHOLARS

DONOR PARTNER SINCE 2010
SCHOLARS SUPPORTED: 25

.....

Dick Schulze is the founder and chairman emeritus of Best Buy Inc., the world's largest consumer electronics retailer. He is also the founder and Chairman of the Richard M. Schulze Family Foundation (RMSFF). Mr. Schulze believes education is integral to an individual's ability to thrive and build a successful life. It is also integral to a community's health and vitality. RMSFF conducts and funds a number of scholarship programs, ranging from assistance to families seeking high-quality early learning experiences for their preschoolers to programs that prepare teachers to restore American education to a place of prominence among its international peers.

Although Mr. Schulze never attended college due to service in the U.S. military during the Vietnam War, he has invested millions of dollars attempting to provide that advantage to the youth of this generation. His belief is that their odds of success, and society's, will be greatly improved as a result.



ANDRE CLIFTON

.....

De La Salle High School
University of St. Thomas



OLYMPIA MONGO

.....

De La Salle High School
Dillard University



SFM Bob Lund SCHOLAR

DONOR PARTNER SINCE 2022
SCHOLARS SUPPORTED: 1

.....



SFM, headquartered in Bloomington, Minnesota, is a customer-owned mutual insurance company providing more than 28,000 employers throughout the Midwest with workers' compensation coverage. SFM insures businesses of all sizes, partnering with employers to keep workplaces safe and help injured workers recover.

In cooperation with Wallin Education Partners, SFM has created a new scholarship to invest in future leaders and

introduce them to rewarding careers in the insurance industry. The Bob Lund Scholarship is named for SFM's former CEO, who is widely known for his service to the field of insurance and his continuing passion for making the world a better place.

"As is the case with many Minnesota employers, underserved communities are underrepresented in SFM's workforce, especially in leadership positions. Funding a scholarship to advance opportunities for communities that have historically faced discrimination and professional barriers, including people of color, women, LGBTQ+ individuals, and immigrants, is a meaningful way to promote diversity and inclusion and to develop a future professional workforce where people from every background have an equal opportunity to succeed."

- Bob Lund



VAN NGUYEN

.....

Robbinsdale Cooper High School
University of Minnesota - Twin Cities

Sit Investment Associates SCHOLAR

DONOR PARTNER SINCE 2014
SCHOLARS SUPPORTED: 5

.....



Sit
Investment
Associates

Sit Investment Associates established the Sit Investment Associates Foundation in 1984 to support organizations involved with human services, hunger, education, health care, the arts and culture, international affairs, and our military veterans. Sit Investment Associates, one of the largest minority-owned asset management firms in the United States, was founded in 1981 by Eugene C. Sit. With only four

senior management professionals, a small support staff, and \$1 million in working capital, the firm's assets under management reached \$1 billion in just three years—an achievement due to solid returns on investment, strong ethical practices, and treasured client relationships. The company now manages assets totaling \$13 billion for institutional and individual investors, providing quality investment management expertise in domestic and international growth equities and fixed income. The Sit Investment Associates Foundation is proud to promote the mission of Wallin Education Partners to enable college and career success for high-potential Minnesota students with financial need through facilitating scholarships and providing comprehensive advising support.



MELANIE SOE

.....

Roseville Area High School
University of Minnesota - Twin Cities

SPS Commerce SCHOLAR

DONOR PARTNER SINCE 2021
SCHOLARS SUPPORTED: 2



SPS Commerce is taking action to address educational inequity in Minnesota and accelerate change in our communities.

We are proud to support individuals pursuing a career in technology with their educational and career goals through the SPS Commerce Diverse Scholar Program. In addition to receiving funding to support their education, SPS Commerce Diverse Scholars participate in our internship program, have access to mentors and are connected to a wide range of business professionals.

SPS Commerce is the world's leading retail network, connecting trading partners around the globe to optimize supply chain operations for all retail partners. We support data-driven partnerships with innovative cloud technology, customer-obsessed service and accessible experts so our

customers can focus on what they do best. To date, more than 95,000 companies in retail, distribution, grocery and e-commerce have chosen SPS as their retail network. SPS is headquartered at the SPS Tower in Minneapolis.



AYUB FARAH



South High School
University of Minnesota - Twin Cities



Star of the North SCHOLARS

Star of the North scholars are funded from the general operating income of Wallin Education Partners, which comes from unrestricted gifts of alumni, trustees, staff, foundations, corporations, and individuals committed to helping advance the mission of Wallin Education Partners. The Star of the North Scholarship also celebrates the dedication of Wallin Education Partners staff, Alumni Association, and Trustees whose commitment to excellence and opportunity will be reflected in the lives and future contributions of these Star of the North scholars.



MAXWELL AYIVI

.....

Champlin Park High School
University of Minnesota - Twin Cities



ZOEY BRUFFETT

.....

South High School
University of Minnesota - Twin Cities



MIA CAMPBELL

.....

Patrick Henry High School
North Carolina A & T University



OLLIE DAMM

.....
Southwest High School
University of St. Thomas



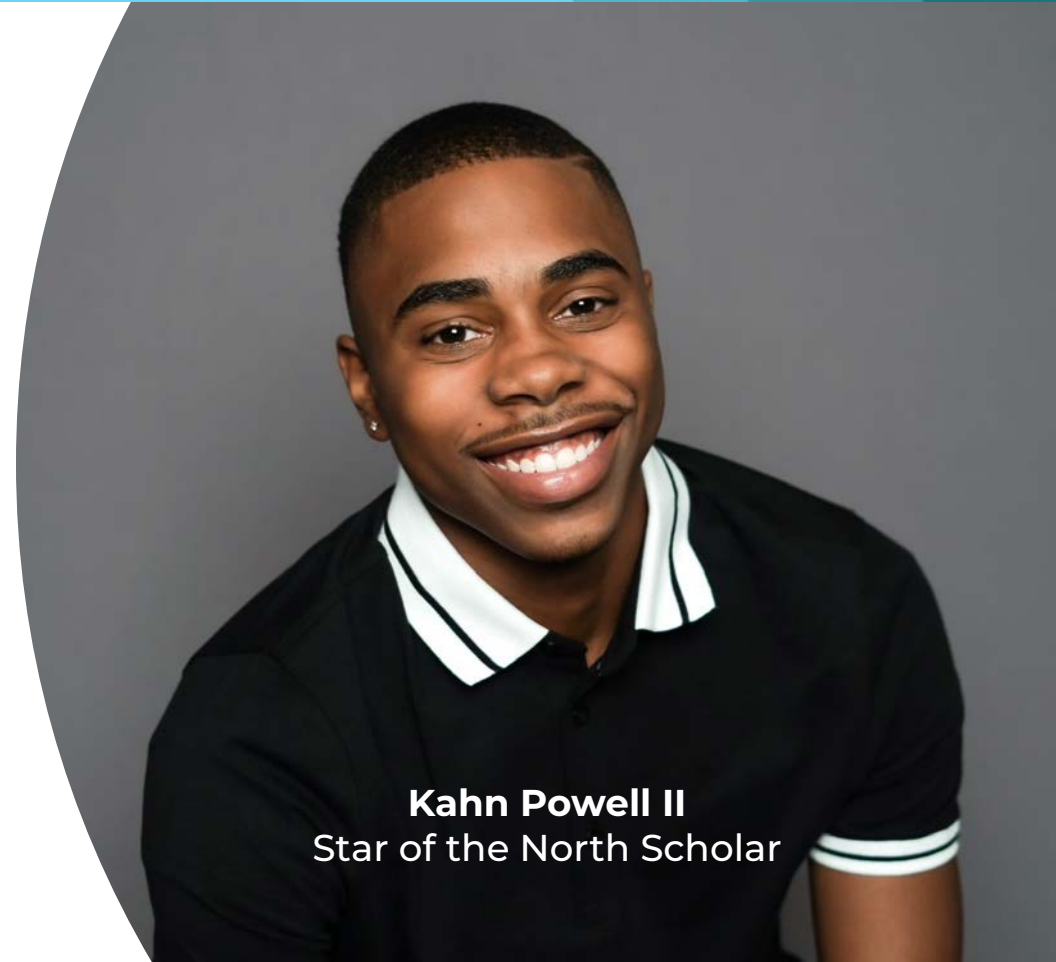
MASHA FADUL

.....
Brooklyn Center High School
University of Minnesota - Twin Cities



CHERYL FUENTES PALMA

.....
De La Salle High School
University of St. Thomas



Kahn Powell II
Star of the North Scholar

Star of the North SCHOLARS



I't Salaam • Star of the North Scholar



JAIR GARCES

.....

Hopkins High School
University of St. Thomas



SARAH HOVIS

.....

Hope Academy
University of Minnesota - Twin Cities



LILI JAMPSA

.....

Saint Louis Park High School
University of Minnesota - Twin Cities



KAHN POWELL II

.....

De La Salle High School
North Carolina A & T University



I'T SALAAM

.....

De La Salle High School
University of Minnesota - Twin Cities



NADIA RAMIREZ

.....

Washington Technical Magnet School
University of Minnesota - Twin Cities



OBELYN SMITH

.....

Spring Lake Park High School
University of Minnesota - Twin Cities

Think IT Young Professional SCHOLARS

DONOR PARTNER SINCE 2015
SCHOLARS SUPPORTED: 35

.....



Think IT is a professional development association offered by York Solutions for IT professionals that brings a diverse set of minds together to discuss common technology challenges across industries. The overall mission of Think IT is to foster professional growth and development through the power of networking and collaboration. Most groups meet monthly in an informal, roundtable format with a different member

from the group facilitating each session. Through the Think IT Association, members also can participate in our other programs. Being a member of Think IT allows them to be involved in the Link to Leadership and the Amazing Leadership Programs. These are leadership development programs that directly benefit Genesys Works, a community partner of Wallin Education Partners.

Scholarships through Wallin Education Partners are awarded to Genesys Works students pursuing degrees in the IT field.



KHADRO ADOOW

.....

Higher Ground Academy
Augsburg University



HODAN AHMED

.....

Spring Lake Park High School
Augsburg University



MUSHTAQ AHMED

.....

Woodbury High School
Metropolitan State University



NATTY WOLDEYES

.....

Henry Sibley Senior High School
Augsburg University



True North SCHOLARS

DONOR PARTNER SINCE 2016
SCHOLARS SUPPORTED: 7

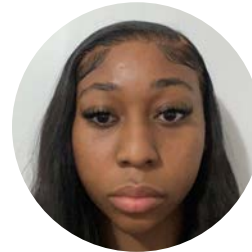


My parents believed strongly in education and their expectation framed my school years, influencing my own commitment to “learning for life.” I was fortunate to have the opportunity to attend kindergarten through graduate school. The True North Scholarship will grant a student an opportunity to higher education and its lifelong benefits. Education will always be with you as a lifelong guide. Education opens doors for economic benefit, generates curiosity, inspires ideas, and develops understanding. Education expands your worldview and your relationship to the world.

You were selected as a True North Scholar because of your intelligence, resilience, determination, and dedication to learning and improving yourself and the life of your family. You are breaking new ground and redefining expectations which takes tremendous strength and courage. Helping a student access a college education has always been my

dream. Thank you for helping me fulfill my dream. May this scholarship help you find the path to your True North.

Donor· Ginny Grossman



JORJA BROWN-SKINNER



North Community High School
University of Minnesota - Twin Cities



GILLIAN LEE



Anoka High School
Concordia College: Moorhead



U.S. Bank SCHOLARS

DONOR PARTNER SINCE 2015
SCHOLARS SUPPORTED: 60

.....



At U.S. Bank, our Corporate Social Responsibility work is built on a foundation of ethics, integrity, and trust and highlights our commitment to economic development in the communities we serve. Our commitment to CSR comes to life through Community Possible, our corporate giving and engagement platform that closes the gap between people and possibility in the areas of Work, Home, and Play.

We know that a flourishing small business environment and an educated workforce contribute to strong

communities. That's why we invest in and support programs and organizations that help small businesses thrive, provide pathways to higher education, help people succeed in the workforce, and gain greater financial literacy.

Our employees affect real change. We commit to one another, our communities, and our company, empowered to do good through time off to volunteer, channels for sharing our innovative ideas, programs that help us chart our careers and meet mentors, and much more.

We are committed to ethics and quality, and we know that developing communities means investing in people and financial futures. We are proud to support Wallin Education Partners and help high achieving, diverse students in the Twin Cities dream big, and strengthen their financial futures.

In our U.S. Bank spirit of actively developing, strengthening, and energizing the communities where we live and work, we hope all Wallin Education Partners Scholars embrace the vast educational opportunities that are in front of them, reach out to mentors who will guide them in their educational pursuits and,

most importantly, use their college experiences to improve the lives of others.

We are proud to work alongside Wallin Education Partners Scholars at U.S. Bank and support them in beginning a meaningful career.



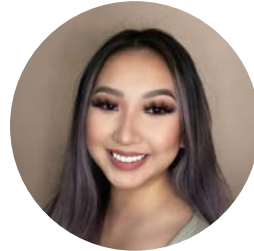
YUSRA ALI

.....
Southwest High School
University of Minnesota - Twin Cities



BROOK DESTA

.....
Columbia Heights High School
Carleton College



SANDY LEE

.....
Harding High School
University of Minnesota - Twin Cities



AMBER PHAM

.....
Como Park Senior High School
University of Minnesota - Twin Cities



LE VO

.....
Champlin Park High School
University of Minnesota - Twin Cities

Wallin Foundation SCHOLARS



DONOR PARTNER SINCE 1992
SCHOLARS SUPPORTED: 2843



Founded in 1992, Winston (Win) and Maxine Wallin initially started funding four-year college scholarships at Minneapolis South High School, Mr. Wallin's alma mater. They expanded the Program to all Minneapolis public high schools in 2000. St. Paul public schools were included in 2006, with Anoka-Hennepin high schools next in 2007. Over the years, other very generous Donor Partners have joined the Education Partners to offer their own named scholarships. The Program has grown significantly in recent years, with the Wallin Education Partners (WEP) now helping support students at 69 high schools. The intention of the Program is to educate young people in our community who

are hard-working and ambitious and in search of better futures. The extremely high graduation rates of the Program (above 90 percent) are what sets WEP apart. To date, thousands of our students have gone on to lead successful lives after achieving their college degrees.

Both Win and Maxine benefited from college scholarships themselves. Win grew up in South Minneapolis and went onto a successful business career at both Pillsbury and Medtronic. Maxine is from Duluth and was able to attend both Macalester and the University of Minnesota (eventually becoming a

librarian). They both believe strongly in the power of education to change lives for the better. They are both honored to be in the enviable position (and Mr. Wallin would say lucky enough) to be able to give back to the community and offer these scholarships and related student support services.

Although Mr. Wallin passed away in December 2010, the legacy he and his wife established long ago continues. Maxine Wallin and her family are pleased to offer you the opportunity to become a new member of this scholarship program family. Wallin Scholars have gone forth to excel in their undergraduate and graduate studies and to become strong contributing members (and leaders) in our society. We look forward to celebrating your accomplishments with you as you begin your college experience. We have “Great Expectations” for you on this journey. Congratulations on your award.



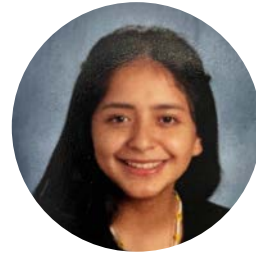
Wallin Foundation SCHOLARS



BARAKA ASWAN

.....

Blaine High School
University of Minnesota - Twin Cities



DANIELA BUNAY

.....

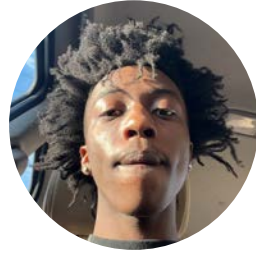
De La Salle High School
University of St. Thomas



JAMIE AUCAPINA CARCHI

.....

Edison Senior High School
University of Minnesota - Twin Cities



JUSTIN CLARK

.....

Washburn High School
Augsburg University



CHLOE BOUMA

.....

Southwest High School
University of Minnesota - Rochester



GRAHAM DOYLE

.....

South High School
University of Minnesota - Twin Cities



MARY DUONG

.....

John A Johnson High School
University of Minnesota - Twin Cities



MICHAEL FUENTES PALMA

.....

De La Salle High School
University of Minnesota - Twin Cities



ROEN EMMERICH

.....

Blaine High School
University of Wisconsin - Madison



KATE GARBOW

.....

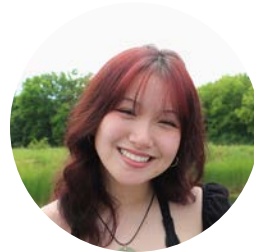
Coon Rapids High School
University of Wisconsin - River Falls



ABRIL FLORES CHACON

.....

De La Salle High School
Minnesota State University Mankato



BONNIE HANSEN

.....

Burnsville Senior High School
University of Minnesota - Twin Cities

Wallin Foundation SCHOLARS



ADNA HASSAN

.....
Hopkins High School
University of Minnesota - Twin Cities



HELEN HUYNH

.....
Tartan Senior High School
University of Minnesota - Twin Cities



MELLANIE HENG

.....
Tartan Senior High School
University of Minnesota - Twin Cities



MIA JENNINGS

.....
Southwest High School
University of Minnesota - Twin Cities



NAJMA HUSSEIN

.....
Saint Louis Park High School
St. Catherine University



ASA KRAUSE

.....
Edison Senior High School
University of Minnesota - Twin Cities



Wallin Foundation SCHOLARS



ALEX LEE

.....

Champlin Park High School
University of Minnesota - Twin Cities



BAE MEH

.....

Roseville Area High School
Hamline University



ANYA LONDON

.....

Southwest High School
Marquette University



GABBY MEYERS

.....

Blaine High School
University of Minnesota - Morris



KELLY LOZANO ANALCO

.....

Hiawatha Collegiate High School
Macalester College



ANWAR MOHAMED

.....

Roseville Area High School
University of Minnesota - Twin Cities



HTOO MOO

.....

Humboldt Senior High School
Metropolitan State University



EGAN MOUA

.....

Brooklyn Center High School
Augsburg University



O'NELL MOUA

.....

Park Center Senior High School
University of St. Thomas



LISA MSUYA

.....

Andover High School
University of Wisconsin - Madison



NAYAN NARULA

.....

Southwest High School
University of Minnesota - Twin Cities



HEIDI NGUYEN

.....

Champlin Park High School
University of Minnesota - Rochester

Wallin Foundation SCHOLARS



TYLER NOSKO

.....

Anoka High School
University of Wisconsin - Stevens Point



MACKENZIE RAK

.....

Andover High School
University of Wisconsin - River Falls



SAFIYA OSMAN

.....

Tartan Senior High School
University of Minnesota - Twin Cities



JEFERSON RIVERA

.....

South High School
Augsburg University



HAMZA RAHMOUNE

.....

Irondale Senior High School
University of Minnesota - Twin Cities



CHRIS RODRIGUEZ

.....

Hiawatha Collegiate High School
University of Minnesota - Twin Cities



SHARON ROSAS BENITEZ

.....

John F Kennedy Senior High School
University of Minnesota - Twin Cities



MAKENZIE TAYLOR

.....

Anoka High School
College of St. Scholastica



NIMROD TESFAHIWET

.....

Highland Park Senior High School
University of St. Thomas



Nayan Narula
Wallin Foundation Scholar

Wallin Foundation SCHOLARS



AALUNYA TESO

.....

Burnsville Senior High School
University of Minnesota - Rochester



STACY VANG

.....

John A Johnson High School
University of Minnesota - Twin Cities



JONJENG THAO

.....

Central High School
St. Olaf College



SERGIO VELAZQUEZ NAJERA

.....

Southwest High School
College Pending



XIA THAO

.....

Park Center Senior High School
University of Minnesota - Twin Cities



KATHERINE VILLA

.....

De La Salle High School
St. Catherine University



KACHSIA VUE

.....

Washington Technical Magnet School
University of Minnesota - Twin Cities



PANG CHA YANG

.....

Park Center Senior High School
St. Catherine University



PHENG XIONG

.....

John A Johnson High School
University of Minnesota - Twin Cities



JULIE ZHENG

.....

Irondale Senior High School
University of Minnesota - Twin Cities

WCA Foundation SCHOLAR

DONOR PARTNER SINCE 2021
SCHOLARS SUPPORTED: 2

.....

Founded in 1866, the WCA Foundation was the first benevolent nonprofit organization in Minnesota. WCA is run by 50 volunteer members, all women.

- **We believe** that when women are secure, entire communities are stronger.
- **We believe** that in the grantmaking process, the needs of the community and grantees prevail.
- **We believe** that focusing on our work will increase our impact in the community.
- **We believe** in a world where structures and systems are equitable.

We are pleased to support the education of a female student through Wallin Education Partners.



PAW WAH

.....

Como Park Senior High School
St. Catherine University

Well-Being of All Foundation SCHOLARS

DONOR PARTNER SINCE 2018
SCHOLARS SUPPORTED: 6



Kathleen Blatz and Greg Page are honored to be donor partners with Wallin Education Partners. Greg and Kathleen have supported students and education in the Twin Cities and beyond for over 30 years. Kathleen and Greg are committed to giving back to this community and creating a strong workforce within it. They hope to provide valuable educational opportunities to as many young people as possible. Kathleen and Greg want to see students from all socioeconomic backgrounds be successful in their lives and find sustainable and fulfilling careers. They have confidence that Wallin Education Partners will help to make this happen for the students whom they provide scholarships and mentorship.

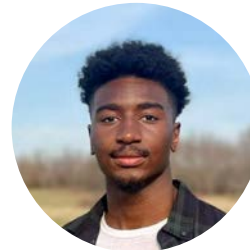
Donors • Kathleen Blatz and Greg Page



SALIH ABDULLAHI



Edison Senior High School
University of Minnesota - Twin Cities



JABIN MOORE



Champlin Park High School
North Dakota State University

Wildhearts SCHOLAR



DONOR PARTNER SINCE 2022
SCHOLARS SUPPORTED: 1

.....

Wildhearts fund supports the equality, education, and endeavors of girls and women.

Donor • Jeanne Ravich



PA CHIA CHANG

.....

Brooklyn Center High School
St. Catherine University

Ya Yang SCHOLAR

DONOR PARTNER SINCE 2022
SCHOLARS SUPPORTED: 1

.....

Ya Yang was 42 when he died. This scholarship was formed to honor him and the legacy he left behind. He was the first in his family to hold a bachelor from a university. He believed that education was one of the best investment one can make for themselves. My hope for the scholar who receives this scholarship is that they will honor him by continuing to invest in themselves, so they can stand tall on the shoulders of the people and community who's had to sacrifice so that Ya and others like him can continue to invest in themselves.

Donor · Pao Her



LUE VANG

.....

Washington Technical Magnet School
University of Minnesota - Twin Cities

